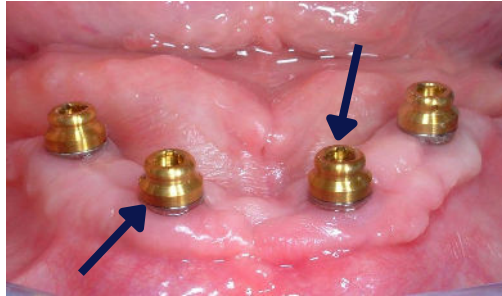


## Care Instructions for patients with Locator Abutments

Clean around each abutment using a fine toothbrush and water flosser. Inadequate cleaning may lead to tissue inflammation and potential bone loss around the implant. Be sure to clean the top of the abutment to prevent food debris buildup, as impaction can interfere with the proper engagement of the denture.



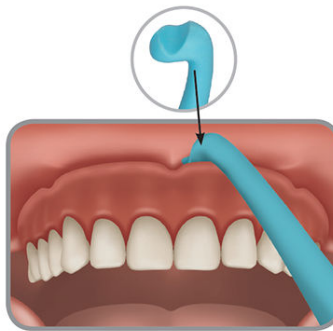
Clean the dentures daily as instructed (refer to Denture Care Instructions). Pay special attention to the nylon inserts underneath the denture, using the pointed end of the brush to remove any debris buildup. For enhanced cleaning, you may also use an ultrasonic cleaner along with brushing.



The nylon inserts will wear down over time and require replacement, with the frequency varying by patient. The doctor will assess their retention every six months and recommend replacement if needed. A fee applies for nylon insert replacement. Different colors indicate different levels of retention, and the doctor will help determine the best color combination for you.



While it may take some practice initially, most patients can easily remove their implant retained dentures using their fingers. However, if you have difficulty, you can use tongue depressors or a brand-specific removal tool. Please consult the doctor for instructions.



The abutment will show wear over time due to friction. Typical life span of a snap-type abutment is approximately 10 years, although this may vary by patient. Severely worn abutments can decrease denture retention and will require replacement. A fee will be applied for abutment replacements.



If you notice the abutment has come loose or has come off, please contact Moonglow Denture Specialists as soon as possible.

